



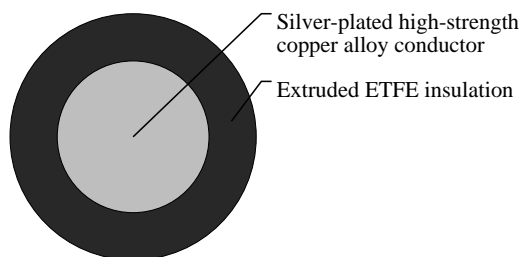
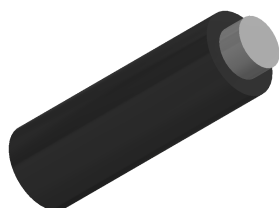
Caledonian

Military Cables

www.caledonian-cables.com

marketing@caledonian-cables.com

MIL-W-81822/13 Type C 1C22AWG



APPLICATIONS

These extruded ETFE (polyvinylidene fluoride) insulated single-core MIL-W-81822/13 cables are used for aerospace and other applications where light weight, tight jacket diameter tolerances and mechanical toughness are required. ETFE insulation also provides exceptional resistance to radiation and chemicals.

VOLTAGE RATING

300V

CABLE CONSTRUCTION

Conductor: Silver-plated high-strength copper alloy

Insulation: Extruded ETFE

COLOUR CODE

MIL-STD-104(See page 65)

PHYSICAL AND THERMAL PROPERTIES

Temperature Range: -55°C to 150°C

DIMENSION AND PARAMETERS

AWG Size	Conductor Stranding	Conductor Diameter	Conductor Diameter	Overall Diameter (min.)	Overall Diameter (min.)	Overall Diameter (max.)	Overall Diameter (max.)	Approx. Weight	Max. Resistance at 20°C
		in	mm	in	mm	in	mm	LBS/MFT	OHMS/MFT
22	Solid	0.0253	0.643	0.037	0.94	0.041	1.04	2.5	19.7